

## INFINITY II

A COMPLETE LINE OF DISPLAYS DESIGNED AROUND MARINE AND MILITARY

The Infinity II Series displays provide an economical, rugged solution for both Marine and Military applications.

### PRODUCT FEATURES

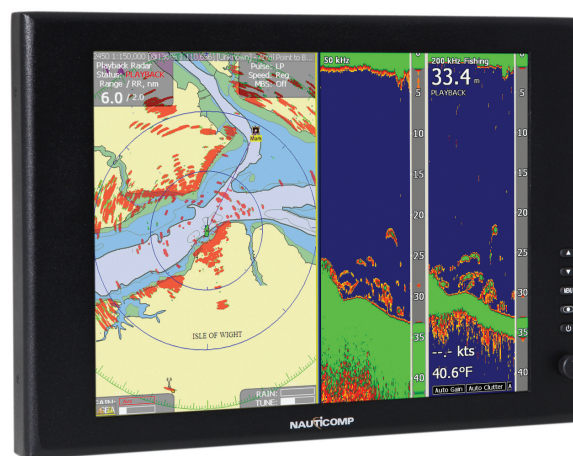
- Sunlight Readable - Ready for all environments
- Waterproof - Built to Stringent IP67 Standards
- Bonded Glass - Optically Enhanced for clarity
- Multiple Inputs - DVI, VGA and Composite (Optional)
- Deep Dimming - 0 to 100% via "Potentiometer"
- Superior Image - Scalable resolution up to SXGA
- Extended Temperature Range
- Picture in Picture - Designed to display ALL inputs

### DEDICATED MARINE DISPLAYS

The new cost effective Infinity II has arrived, with highly efficient CCFL & LED backlight technology, the Infinity II display combines the best of today's cutting edge technology with ease of use. With up to 3 inputs 1 DVI, 1 VGA and optional Composite, on our 15" & 19" models. This product includes our famous dim to red technology, with a slim case design so today's user can put a larger display into a smaller space.

[www.nauticomp.eu](http://www.nauticomp.eu)

# Infinity II



**Nauticomp Inc.**  
8 Callaghan Road  
Lindsay, Ontario  
Canada K9V 4R4  
p: +1.705.328.2992  
f: +1.705.328.2990

\*ISO 9001:2000  
Certified Corporate Offices

**CA Clase (UK) Ltd.**  
2 Mornington Place,  
Waterberry Drive,  
Waterlooville, Hants.  
PO7 7XX  
UK SALES Tel: 0845 2600 620  
UK SALES Fax: 0845 2600 621  
Intl Tel: +44 2392 247920  
Intl Fax: +44 2392 261959  
Email: [info@caclase.co.uk](mailto:info@caclase.co.uk)





+ Available with \*Touch Screen Technology

Specifications	15" CCFL	19" CCFL	15" LED	19" LED
Order Model Part #	24-1510	24-1910	24-1510LED	24-1910LED
Backlight Brightness	750 cd/m2 (nits)	550 cd/m2 (nits)	750 cd/m2 (nits)	750 cd/m2 (nits)
Backlight (full power)	Approx. 50,000 hrs.	Approx. 50,000 hrs.	Approx. 50,000 hrs.	Approx. 50,000 hrs.
Dimming Circuit	Full Brightness To Black (User selectable Red on any input)	Full Brightness To Black (User selectable Red on any input)	Full Brightness To Black (User selectable Red on any input)	Full Brightness To Black (User selectable Red on any input)
Menu Controls	Front Mount	Front Mount	Front Mount	Front Mount
Glass Enhancement	Antiglare Bonded Glass	Antiglare Bonded Glass	Antiglare Bonded Glass	Antiglare Bonded Glass
Display Size	15.0" Diagonal	19.0" Diagonal	15.0" Diagonal	19.0" Diagonal
Display Type	Enhanced - Sunlight Readable TFT LCD	Enhanced - Sunlight Readable TFT LCD	Enhanced - Sunlight Readable TFT LCD	Enhanced - Sunlight Readable TFT LCD
Exterior Dimensions (in)	15.375 W x 10.906 H x 3.25 D	17.813 W x 13.625 H x 3.25 D	15.375 W x 10.906 H x 3.25 D	17.813 W x 13.625 H x 3.25 D
Exterior Dimensions (mm)	390.53 W x 277.01 H x 82.55 D	452.44 W x 346.08 H x 82.55 D	390.53 W x 277.01 H x 82.55 D	452.44 W x 346.08 H x 82.55 D
Operating Temperature F	32 - 131 degrees F	32 - 131 degrees F	(-4) - 158 degrees F	32 - 131 degrees F
Operating Temperature C	0 - 55 degrees C	0 - 55 degrees C	(-20) - +70 degrees C	0 - 55 degrees C
Display Cutout Size (in)	13.75 W x 9.813 H	16.125 W x 12.438 H	13.75 W x 9.813 H	16.125 W x 12.438 H
Display Cutout Size (mm)	349.25 W x 249.25 H	409.58 W x 315.92 H	349.25 W x 249.25 H	409.58 W x 315.92 H
Display Actual Weight	9 lbs. (4.1 kg.)	14 lbs. (6.4 kg.)	9 lbs. (4.1 kg.)	14 lbs. (6.4 kg.)
Display Input Voltage	12.1V DC @ 2.0A (25W)	12.1V DC @ 2.6A (33W)	12.1V DC @ 1.5A (18W)	12.1V DC @ 5.0A (61W)
Native Resolution	1024 x 768 / XGA	1280 x 1024 / SXGA	1024 x 768 / XGA	1280 x 1024 / SXGA
Display Inputs	1 x DVI-D, 1 x VGA	1 x DVI-D, 1 x VGA	1 x DVI-D, 1 x VGA	1 x DVI-D, 1 x VGA
Marine Compliance	NEMA 6/IP67	NEMA 6/IP67	NEMA 6/IP67	NEMA 6/IP67
Video Standard	DVI-D, RGB (VGA, SVGA, XGA, SXGA) NTSC, PAL, SECAM	DVI-D, RGB (VGA, SVGA, XGA, SXGA) NTSC, PAL, SECAM	DVI-D, RGB (VGA, SVGA, XGA, SXGA) NTSC, PAL, SECAM	DVI-D, RGB (VGA, SVGA, XGA, SXGA) NTSC, PAL, SECAM
Power Options	AC or DC	AC or DC	AC or DC	AC or DC
Optional Touch Screen	Touch Screen (31-1510TC)	Touch Screen (31-1510TC)	Touch Screen (31-1910TC)	Touch Screen (31-1910TC)
Optional Composite Video w/ Picture in Picture	Composite Video / PIP (31-1512V)	Composite Video / PIP (31-1512V)	Composite Video / PIP (31-1512V)	Composite Video / PIP (31-1512V)
Mounting Style	Surface / Pedestal	Surface/Pedestal	Surface / Pedestal	Surface/Pedestal
Mounting Alternative	Rear Mounting Ring	Rear Mounting Ring	Rear Mounting Ring	Rear Mounting Ring
Chassis Enclosure	Preformed Aluminum	Preformed Aluminum	Preformed Aluminum	Preformed Aluminum
Chassis Finish	Black Powder Coated	Black Powder Coated	Black Powder Coated	Black Powder Coated
Limited Warranty	2 Year	2 Year	2 Year	2 Year

NOTES: